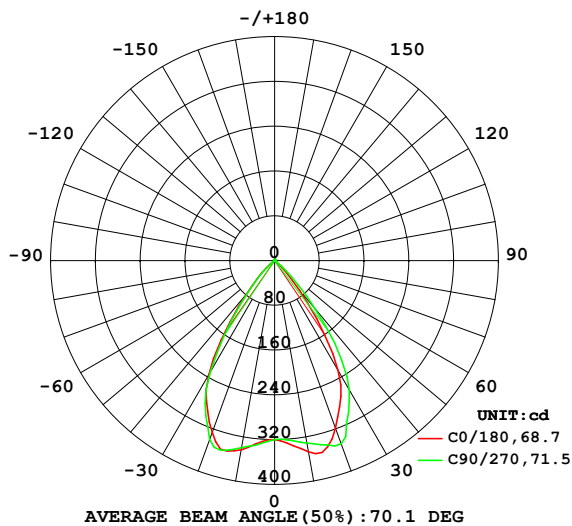


## LUMINAIRE PHOTOMETRIC TEST REPORT

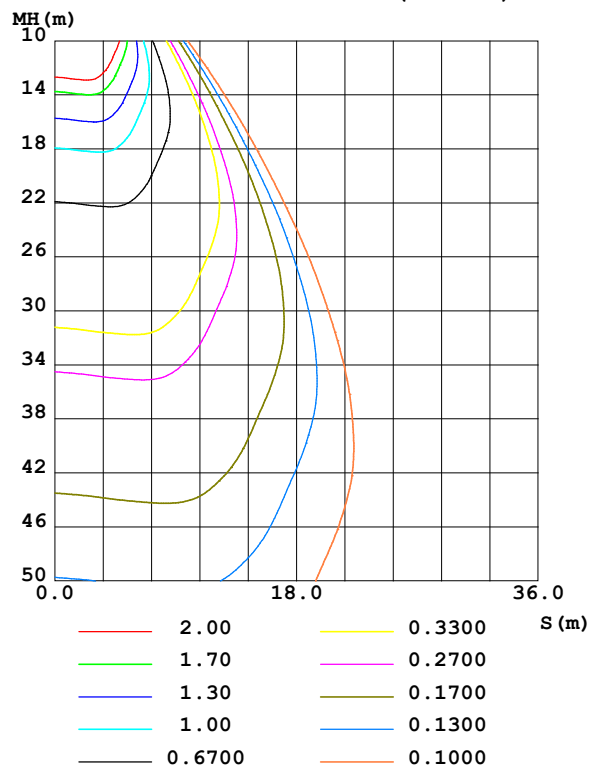
Test:U:220.76V I:0.0533A P:6.2213W PF:0.5283 Freq:49.99Hz UTHDi:0.00% ITHDi:0.00% KDisp:0 Lamp Flux:423.078x1 lm		
NAME: DL6103 3000K RA90 80D	TYPE:	WEIGHT:
SPEC.:	DIM.:	SERIAL No.:
MFR.: VJC lighting	SUR.: 29*29*2	Shielding Angle:

DATA OF LAMP		PHOTOMETRIC DATA Eff: 68.00 lm/W			
MODEL	DL6103 3000K RA90 80D	I <sub>max</sub> (cd)	362.1	S/MH(C0/180)	1.01
NOMINAL POWER(W)	6	LOR(%)	100.0	S/MH(C90/270)	0.99
RATED VOLTAGE(V)	220	TOTAL FLUX(lm)	423.08	η UP,DN(C0-180)	0.4,51.7
NOMINAL FLUX(lm)	423.078	CIE CLASS	DIRECT	η UP,DN(C180-360)	0.4,47.5
LAMPS INSIDE	1	η up (%)	0.9	CIBSE SHR NOM	1.00
TEST VOLTAGE(V)	220	η down (%)	99.1	CIBSE SHR MAX	1.10

LUMINOUS INTENSITY DISTRIBUTION DIAGRAM



C0 PLANE ISOLUX DIAGRAM (UNIT:lx)



C Range: 0 - 360DEG  
C Interval: 22.5DEG  
Test Speed: HIGH  
Temperature: 25.3℃  
Operators: 001  
Test Date: 2025-04-25

γ Range: 0 - 180DEG  
γ Interval: 2.0DEG  
Test System: EVERFINE GO-2000B\_V1 SYSTEM V2.00.456  
Humidity: 65.0%  
Test Distance: 8.370m [K=1.0000]  
Remarks:

## ZONAL FLUX DIAGRAM

## ZONAL FLUX DIAGRAM:

$\gamma$	C0	C45	C90	C135	C180	C225	C270	C315	$\gamma$	$\Phi$ zone	$\Phi$ total	%lum, lamp
10	346.7	338.2	330.7	337.2	343.0	346.4	339.4	347.5	0- 10	31.67	31.67	7.49,7.49
20	318.4	352.0	348.4	357.6	326.3	353.0	339.5	353.8	10- 20	98.96	130.6	30.9,30.9
30	226.6	264.8	266.4	285.2	234.8	256.2	230.6	247.2	20- 30	139.1	269.7	63.7,63.7
40	69.45	125.8	113.8	135.4	78.62	97.64	74.35	91.14	30- 40	109.3	379.0	89.6,89.6
50	5.539	14.75	16.58	19.93	11.39	10.41	7.939	9.195	40- 50	35.23	414.2	97.9,97.9
60	1.026	1.709	1.758	2.068	1.518	1.557	1.009	1.230	50- 60	4.226	418.5	98.9,98.9
70	0.3811	0.3274	0.3196	0.3931	0.4136	0.3099	0.2856	0.1998	60- 70	0.7007	419.2	99.1,99.1
80	0.1217	0.1055	0.0946	0.1337	0.1350	0.0718	0.0055	0	70- 80	0.2044	419.4	99.1,99.1
90	0	0	0	0.0000	0	0	0	0	80- 90	0.0267	419.4	99.1,99.1
100	0	0	0	0	0	0.0000	0.0000	0.0001	90-100	0.0000	419.4	99.1,99.1
110	0.0660	0.0663	0.0553	0.0610	0.0692	0.1110	0.1335	0.1393	100-110	0.0274	419.4	99.1,99.1
120	0.3308	0.3264	0.3106	0.3056	0.3205	0.3770	0.4224	0.4175	110-120	0.2054	419.6	99.2,99.2
130	0.7143	0.6836	0.6909	0.6643	0.6960	0.7455	0.8140	0.7932	120-130	0.4738	420.1	99.3,99.3
140	1.115	1.063	1.085	1.048	1.110	1.136	1.200	1.160	130-140	0.7091	420.8	99.5,99.5
150	1.443	1.385	1.424	1.385	1.469	1.474	1.525	1.474	140-150	0.8044	421.6	99.7,99.7
160	1.705	1.642	1.663	1.652	1.728	1.745	1.772	1.725	150-160	0.7258	422.3	99.8,99.8
170	2.017	1.996	2.018	2.030	2.043	2.097	2.116	2.089	160-170	0.5251	422.9	100,100
180	2.258	2.288	2.302	2.306	2.263	2.290	2.307	2.311	170-180	0.2064	423.1	100,100
DEG	LUMINOUS INTENSITY:cd									UNIT:lm		

Conical surface Flux(90deg): 406.92 lm

%lum = 96.2%

%lamp = 96.2%

Conical surface Flux(130deg): 419 lm

%lum = 99.0%

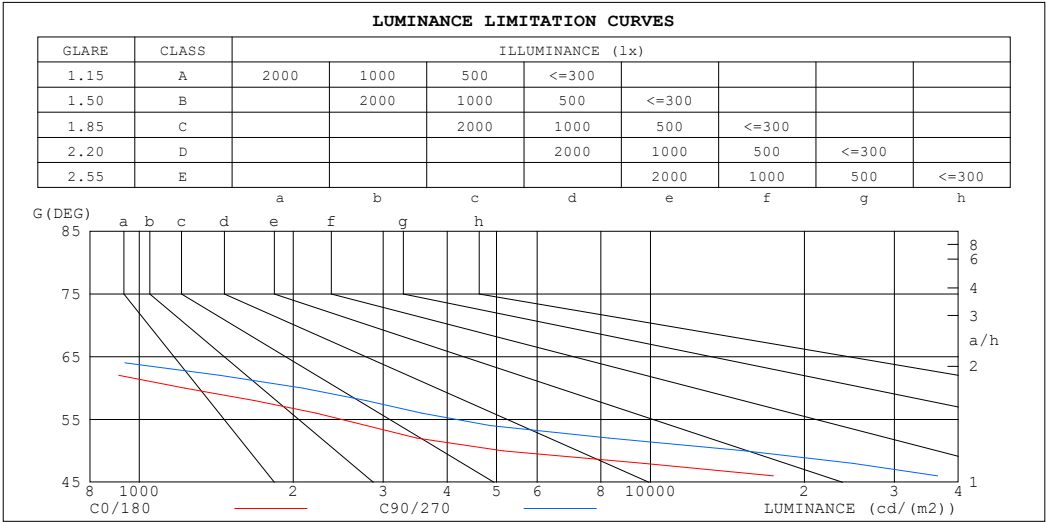
%lamp = 99.0%

C Range: 0 - 360DEG  
 C Interval: 22.5DEG  
 Test Speed: HIGH  
 Temperature:25.3℃  
 Operators:001  
 Test Date:2025-04-25

$\gamma$  Range: 0 - 180DEG  
 $\gamma$  Interval: 2.0DEG  
 Test System:EVERFINE GO-2000B\_V1 SYSTEM V2.00.456  
 Humidity:65.0%  
 Test Distance:8.370m [K=1.0000]  
 Remarks:

LUMINANCE LIMITATION CURVES

Test:U:220.76V I:0.0533A P:6.2213W PF:0.5283 Freq:49.99Hz		
UTHDi:0.00% ITHDi:0.00% KDisp:0 Lamp Flux:423.078x1 lm		
NAME: DL6103 3000K RA90 80D	TYPE:	WEIGHT:
SPEC.:	DIM.:	SERIAL No.:
MFR.: VJC lighting	SUR.: 29*29*2	Shielding Angle:



LUMINANCE cd/(m2)		
G (DEG)	C0/180	C90/270
85	266	228
80	419	324
75	625	510
70	666	555
65	785	971
60	1226	2088
55	2854	4981
50	5148	15312
45	27498	51479

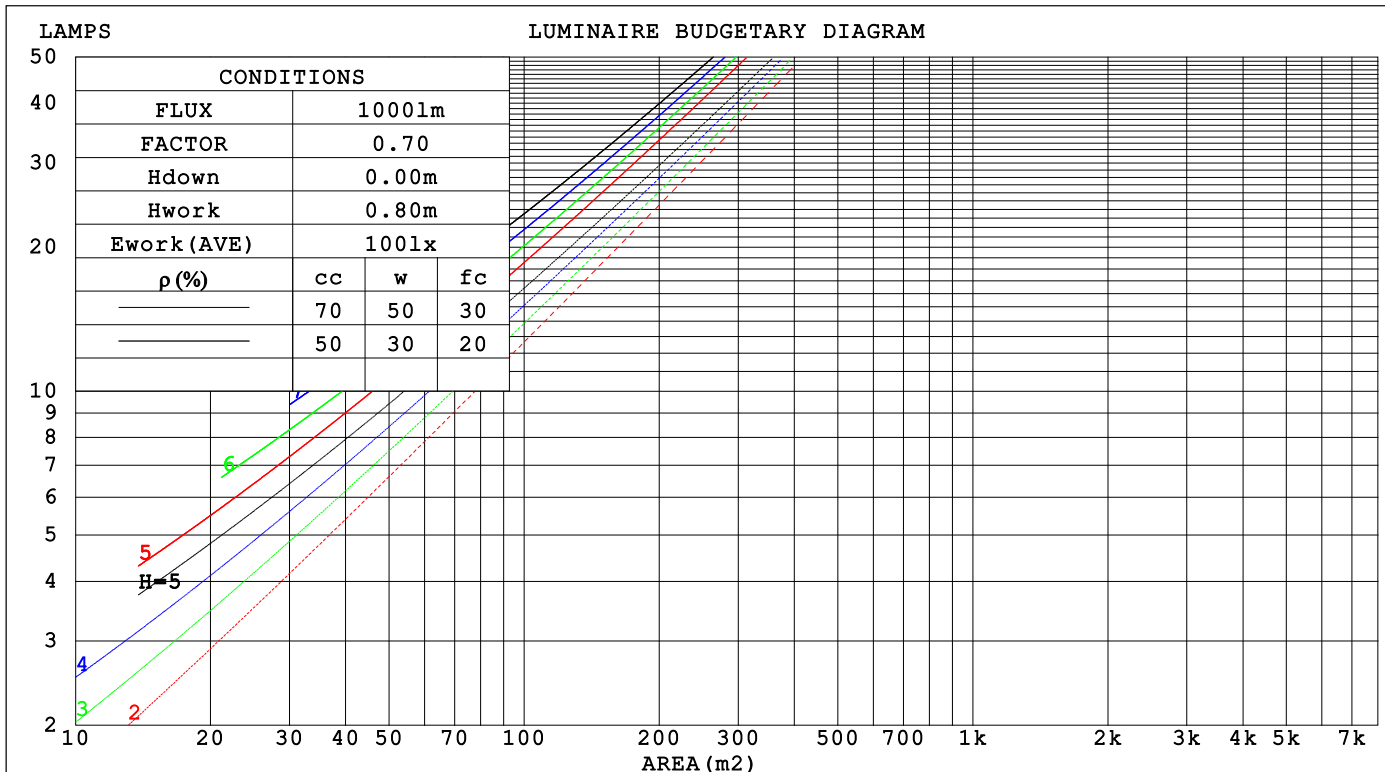
C Range: 0 - 360DEG  
C Interval: 22.5DEG  
Test Speed: HIGH  
Temperature:25.3℃  
Operators:001  
Test Date:2025-04-25

γ Range: 0 - 180DEG  
γ Interval: 2.0DEG  
Test System:EVERFINE GO-2000B\_V1 SYSTEM V2.00.456  
Humidity:65.0%  
Test Distance:8.370m [K=1.0000]  
Remarks:

## CU AND LUMINAIRE BUDGETARY ESTIMATE DIAGRAM

Test:U:220.76V I:0.0533A P:6.2213W PF:0.5283 Freq:49.99Hz		
UTHDi:0.00% ITHDi:0.00% KDisp:0 Lamp Flux:423.078x1 lm		
NAME: DL6103 3000K RA90 80D	TYPE:	WEIGHT:
SPEC.:	DIM.:	SERIAL No.:
MFR.: VJC lighting	SUR.: 29*29*2	Shielding Angle:

pcc	80%			70%			50%			30%			10%			0
pw	50%	30%	10%	50%	30%	10%	50%	30%	10%	50%	30%	10%	50%	30%	10%	0
pfc	20%			20%			20%			20%			20%			0
RCR	RCR:Room Cavity Ratio                      Coefficients of Utilization(CU)															
0.0	1.19	1.19	1.19	1.16	1.16	1.16	1.11	1.11	1.11	1.06	1.06	1.06	1.01	1.01	1.01	.99
1.0	1.10	1.08	1.05	1.08	1.06	1.04	1.04	1.02	1.00	.00	.98	.97	.96	.95	.94	.92
2.0	1.02	.98	.94	1.00	.96	.93	.97	.94	.91	.94	.91	.89	.91	.89	.87	.85
3.0	.95	.89	.85	.93	.88	.84	.90	.86	.83	.88	.84	.82	.85	.83	.80	.79
4.0	.88	.82	.78	.87	.81	.77	.84	.80	.76	.82	.78	.75	.80	.77	.74	.72
5.0	.82	.76	.71	.81	.75	.71	.79	.74	.70	.77	.73	.69	.75	.72	.69	.67
6.0	.76	.70	.65	.75	.69	.65	.74	.68	.65	.72	.68	.64	.71	.67	.63	.62
7.0	.71	.65	.60	.70	.64	.60	.69	.64	.60	.68	.63	.59	.66	.62	.59	.57
8.0	.67	.60	.56	.66	.60	.56	.65	.59	.55	.64	.59	.55	.63	.58	.55	.53
9.0	.62	.56	.52	.62	.56	.52	.61	.55	.52	.60	.55	.51	.59	.54	.51	.50
10.0	.59	.52	.48	.58	.52	.48	.57	.52	.48	.56	.51	.48	.56	.51	.48	.46



C Range: 0 - 360DEG  
C Interval: 22.5DEG  
Test Speed: HIGH  
Temperature:25.3℃  
Operators:001  
Test Date:2025-04-25

γ Range: 0 - 180DEG  
γ Interval: 2.0DEG  
Test System:EVERFINE GO-2000B\_V1 SYSTEM V2.00.456  
Humidity:65.0%  
Test Distance:8.370m [K=1.0000]  
Remarks:

### WEC AND CCEC

Test:U:220.76V I:0.0533A P:6.2213W PF:0.5283 Freq:49.99Hz			UTHDi:0.00% ITHDi:0.00% KDisp:0			Lamp Flux:423.078x1 lm		
NAME: DL6103 3000K RA90 80D			TYPE:			WEIGHT:		
SPEC.:			DIM.:			SERIAL No.:		
MFR.: VJC lighting			SUR.: 29*29*2			Shielding Angle:		

pcc	80%			70%			50%			30%			10%			0	
pw	50%	30%	10%	50%	30%	10%	50%	30%	10%	50%	30%	10%	50%	30%	10%	0	
pfc	20%			20%			20%			20%			20%			0	
RCR	RCR:Room Cavity Ratio						Wall Exitance Coefficients(WEC)										
0.0																	
1.0	.185	.105	.033	.178	.102	.032	.165	.095	.030	.153	.088	.028	.142	.082	.027		
2.0	.179	.098	.030	.173	.095	.029	.162	.090	.028	.151	.085	.027	.142	.080	.025		
3.0	.171	.091	.027	.166	.089	.027	.157	.085	.026	.148	.081	.025	.139	.077	.024		
4.0	.164	.085	.025	.159	.083	.025	.151	.080	.024	.143	.077	.023	.136	.074	.022		
5.0	.156	.080	.023	.153	.078	.023	.145	.076	.022	.138	.073	.022	.132	.071	.021		
6.0	.150	.075	.021	.146	.074	.021	.140	.072	.021	.134	.069	.020	.128	.067	.020		
7.0	.143	.071	.020	.140	.070	.020	.134	.068	.020	.129	.066	.019	.124	.064	.019		
8.0	.137	.067	.019	.134	.066	.019	.129	.065	.018	.124	.063	.018	.120	.061	.018		
9.0	.131	.064	.018	.129	.063	.018	.124	.061	.017	.120	.060	.017	.116	.059	.017		
10.0	.126	.060	.017	.124	.060	.017	.120	.059	.017	.116	.057	.016	.112	.056	.016		

pcc	80%			70%			50%			30%			10%			0	
pw	50%	30%	10%	50%	30%	10%	50%	30%	10%	50%	30%	10%	50%	30%	10%	0	
pfc	20%			20%			20%			20%			20%			0	
RCR	RCR:Room Cavity Ratio						Ceiling Cavity Exitance Coefficients (CCEC)										
0.0	.197	.197	.197	.168	.168	.168	.115	.115	.115	.066	.066	.066	.021	.021	.021		
1.0	.178	.164	.151	.153	.141	.130	.104	.097	.090	.060	.056	.052	.019	.018	.017		
2.0	.164	.139	.118	.140	.120	.102	.096	.083	.071	.055	.048	.042	.018	.016	.014		
3.0	.152	.120	.095	.130	.104	.082	.090	.072	.058	.052	.042	.034	.017	.014	.011		
4.0	.143	.106	.078	.122	.091	.068	.084	.064	.048	.049	.037	.028	.016	.012	.009		
5.0	.134	.094	.065	.115	.082	.057	.080	.057	.040	.046	.034	.024	.015	.011	.008		
6.0	.127	.085	.055	.110	.074	.048	.076	.052	.034	.044	.030	.020	.014	.010	.007		
7.0	.121	.078	.048	.104	.068	.042	.072	.047	.029	.042	.028	.018	.014	.009	.006		
8.0	.116	.072	.042	.100	.062	.036	.069	.044	.026	.040	.026	.015	.013	.008	.005		
9.0	.111	.067	.037	.096	.058	.032	.066	.041	.023	.039	.024	.014	.012	.008	.005		
10.0	.106	.063	.033	.092	.054	.029	.064	.038	.021	.037	.023	.012	.012	.007	.004		

C Range: 0 - 360DEG  
C Interval: 22.5DEG  
Test Speed: HIGH  
Temperature:25.3℃  
Operators:001  
Test Date:2025-04-25

γ Range: 0 - 180DEG  
γ Interval: 2.0DEG  
Test System:EVERFINE GO-2000B\_V1 SYSTEM V2.00.456  
Humidity:65.0%  
Test Distance:8.370m [K=1.0000]  
Remarks:

UGR(Unified Glare Rating) Table

Test:U:220.76V I:0.0533A P:6.2213W PF:0.5283 Freq:49.99Hz UTHDi:0.00% ITHDi:0.00% KDisp:0 Lamp Flux:423.078x1 lm											
NAME: DL6103 3000K RA90 80D						TYPE:		WEIGHT:			
SPEC.:						DIM.:		SERIAL No.:			
MFR.: VJC lighting						SUR.: 29*29*2		Shielding Angle:			
ceiling/cavity	0.7	0.7	0.5	0.5	0.3	0.7	0.7	0.5	0.5	0.3	
walls	0.5	0.3	0.5	0.3	0.3	0.5	0.3	0.5	0.3	0.3	
working plane	0.2	0.2	0.2	0.2	0.2	0.2	0.2	0.2	0.2	0.2	
Room dimensions		Viewed crosswise					Viewed endwise				
x = 2H y = 2H	2H	24.1	25.1	24.3	25.3	25.5	25.6	26.6	25.8	26.8	27.0
	3H	23.9	24.8	24.2	25.0	25.3	25.4	26.3	25.7	26.6	26.8
	4H	23.8	24.7	24.1	24.9	25.2	25.3	26.2	25.6	26.4	26.7
	6H	23.7	24.5	24.0	24.8	25.1	25.2	26.0	25.5	26.3	26.6
	8H	23.7	24.5	24.0	24.7	25.0	25.2	26.0	25.5	26.2	26.5
	12H	23.6	24.4	24.0	24.7	25.0	25.1	25.9	25.5	26.2	26.5
4H	2H	23.8	24.7	24.1	24.9	25.2	25.3	26.2	25.6	26.4	26.7
	3H	23.6	24.4	24.0	24.7	25.0	25.1	25.9	25.5	26.2	26.5
	4H	23.5	24.2	23.9	24.5	24.9	25.0	25.7	25.4	26.0	26.4
	6H	23.4	24.0	23.8	24.4	24.8	24.9	25.5	25.3	25.9	26.2
	8H	23.4	23.9	23.8	24.3	24.7	24.9	25.4	25.3	25.8	26.2
	12H	23.3	23.8	23.8	24.2	24.6	24.8	25.3	25.3	25.7	26.1
8H	4H	23.4	23.9	23.8	24.3	24.7	24.9	25.4	25.3	25.8	26.2
	6H	23.3	23.7	23.7	24.1	24.6	24.8	25.2	25.2	25.6	26.1
	8H	23.2	23.6	23.7	24.1	24.5	24.7	25.1	25.2	25.6	26.0
	12H	23.2	23.5	23.7	24.0	24.5	24.7	25.0	25.2	25.5	26.0
12H	4H	23.3	23.8	23.8	24.2	24.6	24.8	25.3	25.3	25.7	26.1
	6H	23.2	23.6	23.7	24.1	24.5	24.7	25.1	25.2	25.6	26.0
	8H	23.2	23.5	23.7	24.0	24.5	24.7	25.0	25.2	25.5	26.0
Variations with the observer position at spacings(CIE Pub.117):											
S = 1.0H		+ 2.8 / -17.6					+ 2.8 / -17.8				
1.5H		+ 4.9 / -13.8					+ 4.9 / -14.4				
2.0H		+ 7.1 / -11.8					+ 7.2 / -14.7				

CIE Pub.117, 423.1 lm Total Lamp Luminous Flux Correct (8log(F/F0) = -3.0)  
Area: 0.001682 m2

C Range: 0 - 360DEG  
C Interval: 22.5DEG  
Test Speed: HIGH  
Temperature:25.3℃  
Operators:001  
Test Date:2025-04-25

γ Range: 0 - 180DEG  
γ Interval: 2.0DEG  
Test System:EVERFINE GO-2000B\_V1 SYSTEM V2.00.456  
Humidity:65.0%  
Test Distance:8.370m [K=1.0000]  
Remarks:

### UTILIZATION FACTORS TABLE

Test:U:220.76V I:0.0533A P:6.2213W PF:0.5283 Freq:49.99Hz UTHDi:0.00% ITHDi:0.00% KDisp:0 Lamp Flux:423.078x1 lm		
NAME: DL6103 3000K RA90 80D	TYPE:	WEIGHT:
SPEC.:	DIM.:	SERIAL No.:
MFR.: VJC lighting	SUR.: 29*29*2	Shielding Angle:

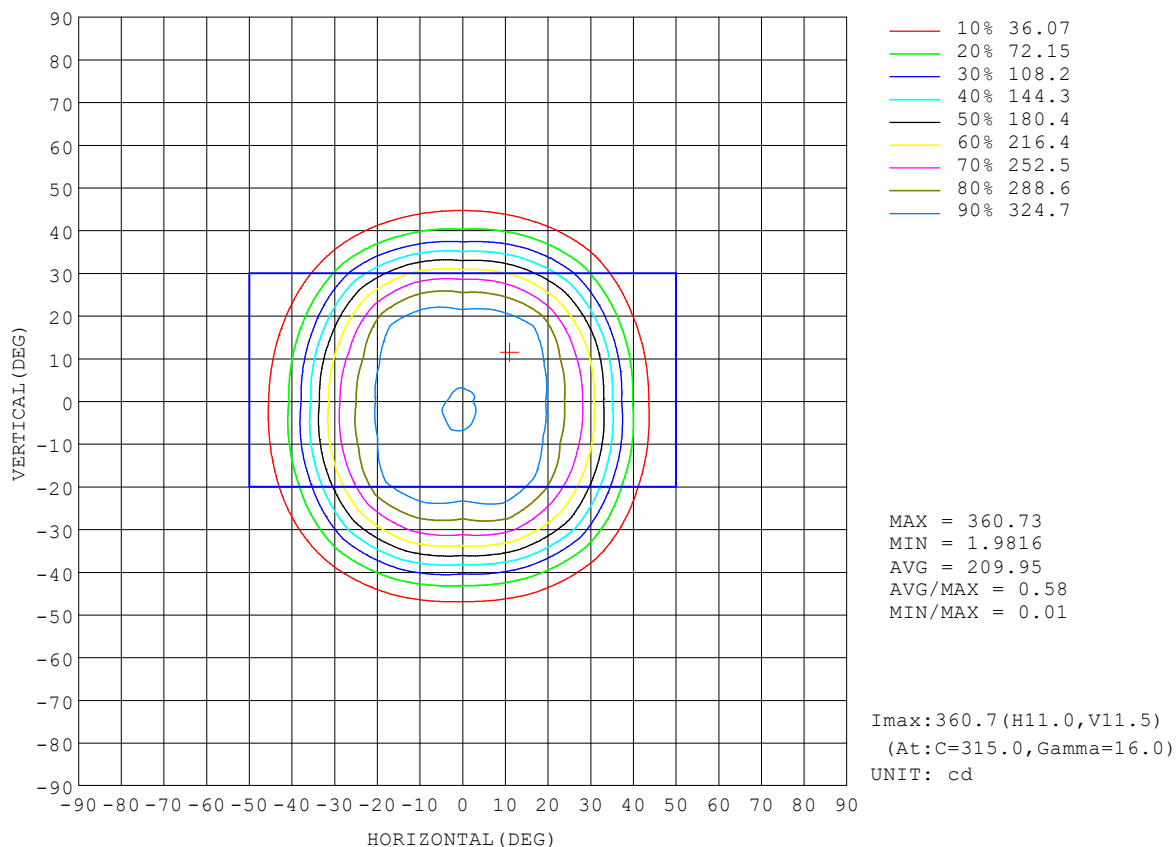
REFLECTANCE										
Ceiling	0.8	0.8	0.8	0.7	0.7	0.7	0.5	0.5	0.5	0
Walls	0.7	0.5	0.3	0.7	0.5	0.3	0.7	0.5	0.3	0
Working plane	0.2	0.2	0.2	0.2	0.2	0.2	0.2	0.2	0.2	0
ROOM INDEX	UTILIZATION FACTORS (PERCENT) $k(RI) \times RCR = 5$									
$k = 0.60$	85	78	74	84	78	74	84	78	74	70
0.80	93	87	83	92	86	83	91	86	82	78
1.00	98	92	88	97	91	88	95	91	87	83
1.25	102	97	93	101	96	93	99	95	92	87
1.50	105	100	97	104	99	96	101	98	95	90
2.00	108	104	100	106	102	99	104	100	98	92
2.50	110	106	103	108	104	102	105	102	100	93
3.00	111	108	105	109	106	104	106	103	101	95
4.00	113	110	108	111	109	107	107	105	104	96
5.00	115	112	110	112	110	109	108	107	105	97
ROOM INDEX	UF (total)									Direct
According to DIN EN 13032-2 2004			Suspended					SHRNOM = 1.25		

C Range: 0 - 360DEG  
C Interval: 22.5DEG  
Test Speed: HIGH  
Temperature: 25.3℃  
Operators: 001  
Test Date: 2025-04-25

γ Range: 0 - 180DEG  
γ Interval: 2.0DEG  
Test System: EVERFINE GO-2000B\_V1 SYSTEM V2.00.456  
Humidity: 65.0%  
Test Distance: 8.370m [K=1.0000]  
Remarks:

## ISOCANDELA DIAGRAM

Test:U:220.76V I:0.0533A P:6.2213W PF:0.5283 Freq:49.99Hz UTHDi:0.00% ITHDi:0.00% KDisp:0 Lamp Flux:423.078x1 lm		
NAME: DL6103 3000K RA90 80D	TYPE:	WEIGHT:
SPEC.:	DIM.:	SERIAL No.:
MFR.: VJC lighting	SUR.: 29*29*2	Shielding Angle:



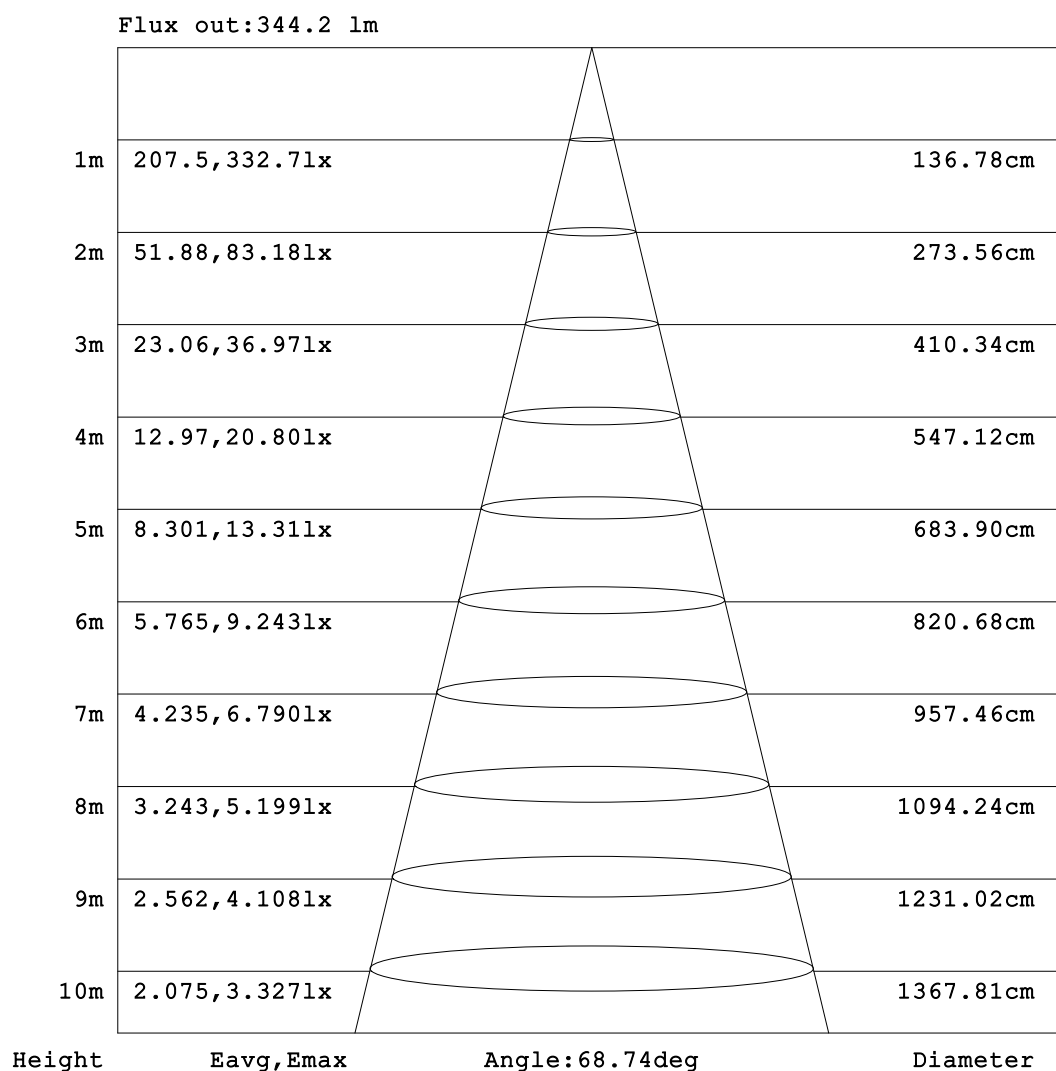
C Range: 0 - 360DEG  
C Interval: 22.5DEG  
Test Speed: HIGH  
Temperature:25.3℃  
Operators:001  
Test Date:2025-04-25

γ Range: 0 - 180DEG  
γ Interval: 2.0DEG  
Test System:EVERFINE GO-2000B\_V1 SYSTEM V2.00.456  
Humidity:65.0%  
Test Distance:8.370m [K=1.0000]  
Remarks:



### AAI Figure

Test:U:220.76V I:0.0533A P:6.2213W PF:0.5283 Freq:49.99Hz UTHDi:0.00% ITHDi:0.00% KDisp:0 Lamp Flux:423.078x1 lm		
NAME: DL6103 3000K RA90 80D	TYPE:	WEIGHT:
SPEC.:	DIM.:	SERIAL No.:
MFR.: VJC lighting	SUR.: 29*29*2	Shielding Angle:



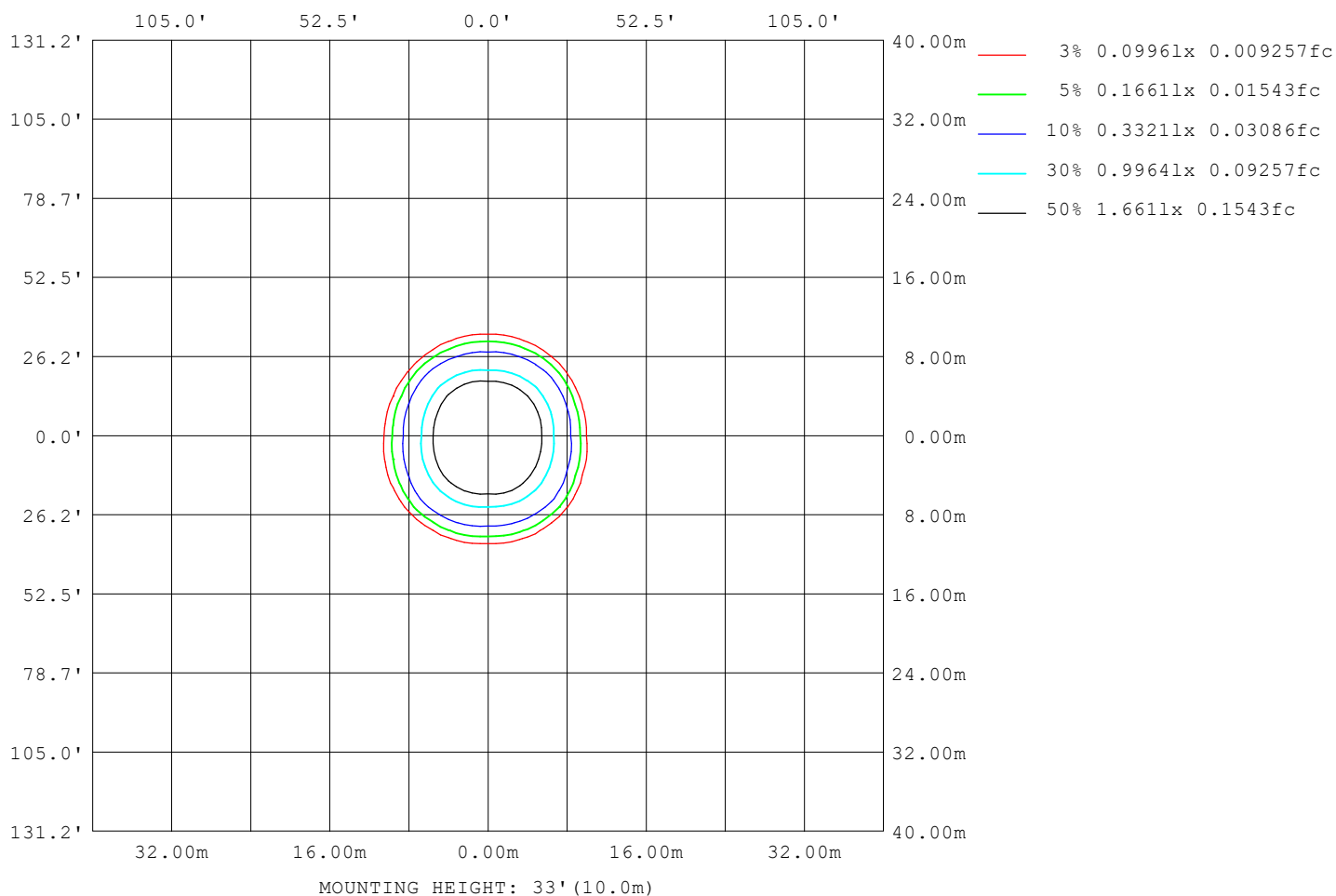
Note:The Curves indicate the illuminated area and the average illumination when the luminaire is at different distance.

C Range: 0 - 360DEG  
C Interval: 22.5DEG  
Test Speed: HIGH  
Temperature:25.3℃  
Operators:001  
Test Date:2025-04-25

γ Range: 0 - 180DEG  
γ Interval: 2.0DEG  
Test System:EVERFINE GO-2000B\_V1 SYSTEM V2.00.456  
Humidity:65.0%  
Test Distance:8.370m [K=1.0000]  
Remarks:

## ISOLUX DIAGRAM

Test:U:220.76V I:0.0533A P:6.2213W PF:0.5283 Freq:49.99Hz UTHDi:0.00% ITHDi:0.00% KDisp:0 Lamp Flux:423.078x1 lm		
NAME: DL6103 3000K RA90 80D	TYPE:	WEIGHT:
SPEC.:	DIM.:	SERIAL No.:
MFR.: VJC lighting	SUR.: 29*29*2	Shielding Angle:



C Range: 0 - 360DEG  
C Interval: 22.5DEG  
Test Speed: HIGH  
Temperature: 25.3°C  
Operators: 001  
Test Date: 2025-04-25

γ Range: 0 - 180DEG  
γ Interval: 2.0DEG  
Test System: EVERFINE GO-2000B\_V1 SYSTEM V2.00.456  
Humidity: 65.0%  
Test Distance: 8.370m [K=1.0000]  
Remarks:

## LED Avg.L Report

Test:U:220.76V I:0.0533A P:6.2213W PF:0.5283 Freq:49.99Hz UTHDi:0.00% ITHDi:0.00% KDisp:0 Lamp Flux:423.078x1 lm		
NAME: DL6103 3000K RA90 80D	TYPE:	WEIGHT:
SPEC.:	DIM.:	SERIAL No.:
MFR.: VJC lighting	SUR.: 29*29*2	Shielding Angle:

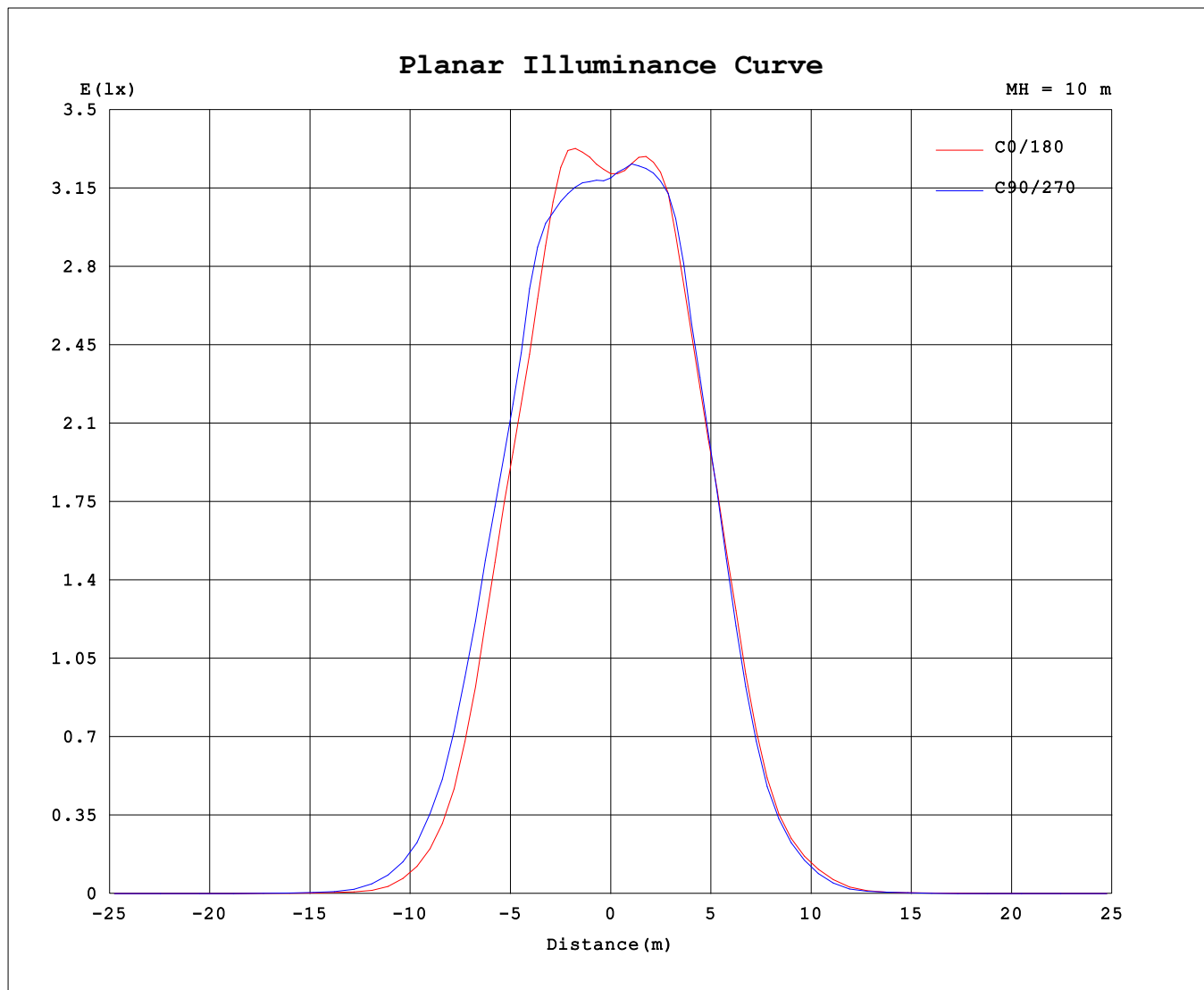
AvgL	cd/m2
L_0~180 (65) av	796
L_0~180 (75) av	584
L_0~180 (85) av	146
L_90~270 (65) av	699
L_90~270 (75) av	383
L_90~270 (85) av	79
L_45 (65) av	998
L_45 (75) av	378
L_45 (85) av	112

Standard: GB/T 29293-2012

C Range: 0 - 360DEG  
C Interval: 22.5DEG  
Test Speed: HIGH  
Temperature:25.3℃  
Operators:001  
Test Date:2025-04-25

γ Range: 0 - 180DEG  
γ Interval: 2.0DEG  
Test System:EVERFINE GO-2000B\_V1 SYSTEM V2.00.456  
Humidity:65.0%  
Test Distance:8.370m [K=1.0000]  
Remarks:

## Planar Illuminance Curve



C Range: 0 - 360DEG  
C Interval: 22.5DEG  
Test Speed: HIGH  
Temperature: 25.3 °C  
Operators: 001  
Test Date: 2025-04-25

$\gamma$  Range: 0 - 180DEG  
 $\gamma$  Interval: 2.0DEG  
Test System: EVERFINE GO-2000B\_V1 SYSTEM V2.00.456  
Humidity: 65.0%  
Test Distance: 8.370m [K=1.0000]  
Remarks:

## LUMINOUS DISTRIBUTION INTENSITY DATA

Test:U:220.76V I:0.0533A P:6.2213W PF:0.5283 Freq:49.99Hz		
UTHDi:0.00% ITHDi:0.00% KDisp:0 Lamp Flux:423.078x1 lm		
NAME: DL6103 3000K RA90 80D	TYPE:	WEIGHT:
SPEC.:	DIM.:	SERIAL No.:
MFR.: VJC lighting	SUR.: 29*29*2	Shielding Angle:

Table--1

UNIT: cd

C (DEG) γ (DEG)	0	22.5	45	67.5	90	112.5	135	157.5	180	202.5	225	247.5	270	292.5	315	337.5			
0	320	320	320	320	320	320	320	320	320	320	320	320	320	320	320	320			
5	327	325	324	322	321	320	321	322	324	325	326	326	327	328	328	328			
10	347	344	338	333	331	332	337	341	343	346	346	341	339	344	348	349			
15	353	354	353	344	339	344	351	350	351	355	358	351	349	353	360	360			
20	318	328	352	354	348	357	358	336	326	333	353	350	340	351	354	332			
25	286	293	326	340	317	339	340	310	295	300	328	318	303	312	326	297			
30	227	243	265	281	266	281	285	257	235	240	256	250	231	242	247	238			
35	161	189	217	227	214	232	229	203	171	180	197	183	162	177	189	180			
40	69.5	91.2	126	127	114	134	135	103	78.6	86.8	97.6	85.3	74.3	85.4	91.1	80.2			
45	32.6	43.5	65.2	66.2	61.3	72.4	75.5	54.8	44.9	42.8	46.2	41.8	40.5	40.6	42.6	34.8			
50	5.54	10.0	14.7	19.5	16.6	20.5	19.9	19.9	11.4	12.2	10.4	11.2	7.94	10.4	9.19	7.05			
55	2.74	3.37	5.20	6.69	4.81	6.68	6.76	6.82	3.67	3.85	4.19	3.60	3.16	3.25	3.56	2.71			
60	1.03	1.34	1.71	1.78	1.76	1.99	2.07	1.84	1.52	1.51	1.56	1.24	1.01	1.08	1.23	1.07			
65	0.56	0.62	0.92	0.77	0.69	0.89	1.14	0.94	0.71	0.72	0.82	0.60	0.50	0.48	0.48	0.51			
70	0.38	0.34	0.33	0.29	0.32	0.31	0.39	0.40	0.41	0.40	0.31	0.34	0.29	0.26	0.20	0.28			
75	0.27	0.24	0.23	0.20	0.22	0.21	0.26	0.29	0.29	0.29	0.21	0.23	0.16	0.13	0.05	0.12			
80	0.12	0.10	0.11	0.08	0.09	0.08	0.13	0.14	0.13	0.15	0.07	0.08	0.01	0.00	0.00	0.00			
85	0.04	0.02	0.04	0.01	0.03	0.01	0.06	0.06	0.05	0.07	0.01	0.01	0.00	0.00	0.00	0.00			
90	0.00	0.00	0.00	0.00	0.00	0.00	0.00	0.00	0.00	0.00	0.00	0.00	0.00	0.00	0.00	0.00			
95	0.00	0.00	0.00	0.00	0.00	0.00	0.00	0.00	0.00	0.00	0.00	0.00	0.00	0.00	0.00	0.00			
100	0.00	0.00	0.00	0.00	0.00	0.00	0.00	0.00	0.00	0.00	0.00	0.00	0.00	0.00	0.00	0.00			
105	0.00	0.01	0.00	0.01	0.00	0.01	0.00	0.00	0.00	0.00	0.03	0.00	0.03	0.01	0.04	0.00			
110	0.07	0.10	0.07	0.09	0.06	0.08	0.06	0.08	0.07	0.06	0.11	0.10	0.13	0.11	0.14	0.09			
115	0.16	0.18	0.15	0.17	0.14	0.17	0.14	0.16	0.15	0.14	0.21	0.19	0.23	0.21	0.24	0.19			
120	0.33	0.35	0.33	0.34	0.31	0.34	0.31	0.33	0.32	0.31	0.38	0.38	0.42	0.40	0.42	0.36			
125	0.47	0.49	0.46	0.48	0.45	0.47	0.44	0.46	0.45	0.45	0.51	0.52	0.57	0.55	0.56	0.50			
130	0.71	0.72	0.68	0.72	0.69	0.70	0.66	0.69	0.70	0.69	0.75	0.76	0.81	0.79	0.79	0.73			
135	0.89	0.88	0.84	0.88	0.85	0.86	0.82	0.86	0.86	0.86	0.91	0.90	0.97	0.94	0.93	0.89			
140	1.11	1.10	1.06	1.11	1.09	1.09	1.05	1.09	1.11	1.10	1.14	1.14	1.20	1.17	1.16	1.11			
145	1.26	1.25	1.21	1.25	1.23	1.24	1.20	1.24	1.27	1.25	1.28	1.28	1.34	1.30	1.30	1.25			
150	1.44	1.44	1.38	1.43	1.42	1.42	1.38	1.44	1.47	1.44	1.47	1.47	1.52	1.47	1.47	1.44			
155	1.55	1.54	1.49	1.53	1.53	1.53	1.49	1.55	1.58	1.56	1.58	1.57	1.63	1.57	1.57	1.54			
160	1.71	1.69	1.64	1.68	1.66	1.68	1.65	1.72	1.73	1.72	1.75	1.74	1.77	1.73	1.72	1.69			
165	1.82	1.81	1.77	1.81	1.78	1.81	1.79	1.84	1.84	1.83	1.88	1.87	1.91	1.86	1.86	1.82			
170	2.02	2.03	2.00	2.03	2.02	2.04	2.03	2.07	2.04	2.05	2.10	2.07	2.12	2.08	2.09	2.05			
175	2.14	2.17	2.15	2.17	2.16	2.20	2.19	2.21	2.17	2.18	2.23	2.20	2.24	2.21	2.23	2.18			
180	2.26	2.27	2.29	2.29	2.30	2.31	2.31	2.31	2.26	2.27	2.29	2.29	2.31	2.30	2.31	2.30			

C Range: 0 - 360DEG

C Interval: 22.5DEG

Test Speed: HIGH

Temperature:25.3℃

Operators:001

Test Date:2025-04-25

γ Range: 0 - 180DEG

γ Interval: 2.0DEG

Test System:EVERFINE GO-2000B\_V1 SYSTEM V2.00.456

Humidity:65.0%

Test Distance:8.370m [K=1.0000]

Remarks: